

# STATE OF CALIFORNIA DEPARTMENT OF PARKS AND RECREATION



## Route Closure – Skyline Route Mount San Jacinto State Park and Wilderness

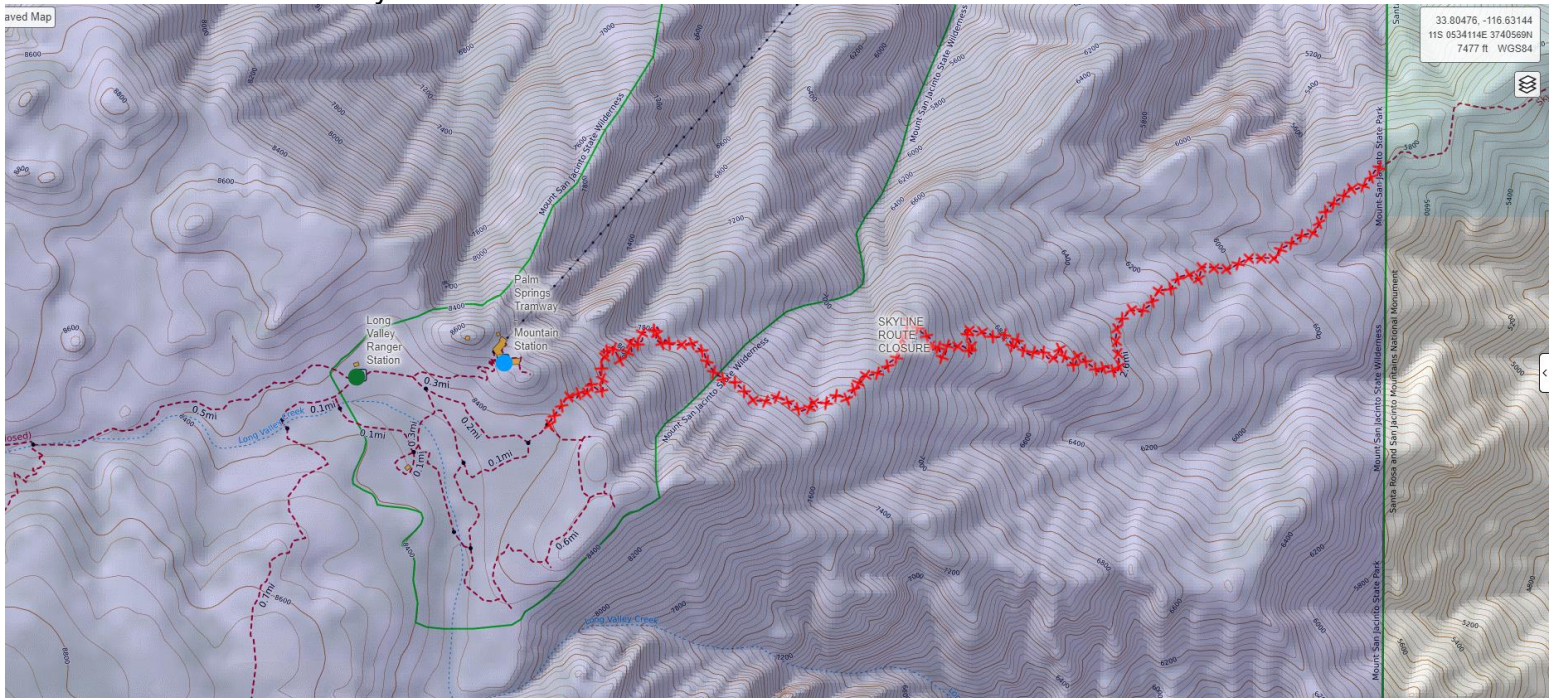
July 9, 2024  
Inland Empire District

**DISTRICT SUPERINTENDENTS ORDER NO. 954-24-007**  
Supersedes District Superintendent Order No. 954-23-007

**Whereas:** Skyline Route conditions are unsafe above 5800' within Mt. San Jacinto State Park due to excessive heat.

**Therefore:** Skyline Route is closed until further notice from the 5800' State Park Boundary to its intersection with the Desert View Trail as seen below highlighted in red:

5800' State Park Boundary to Desert View Trail



**Figure 1 Purple Shaded Area is State Park Boundary**  
Intersection of Skyline Route and Desert View Trail near Mountain Station

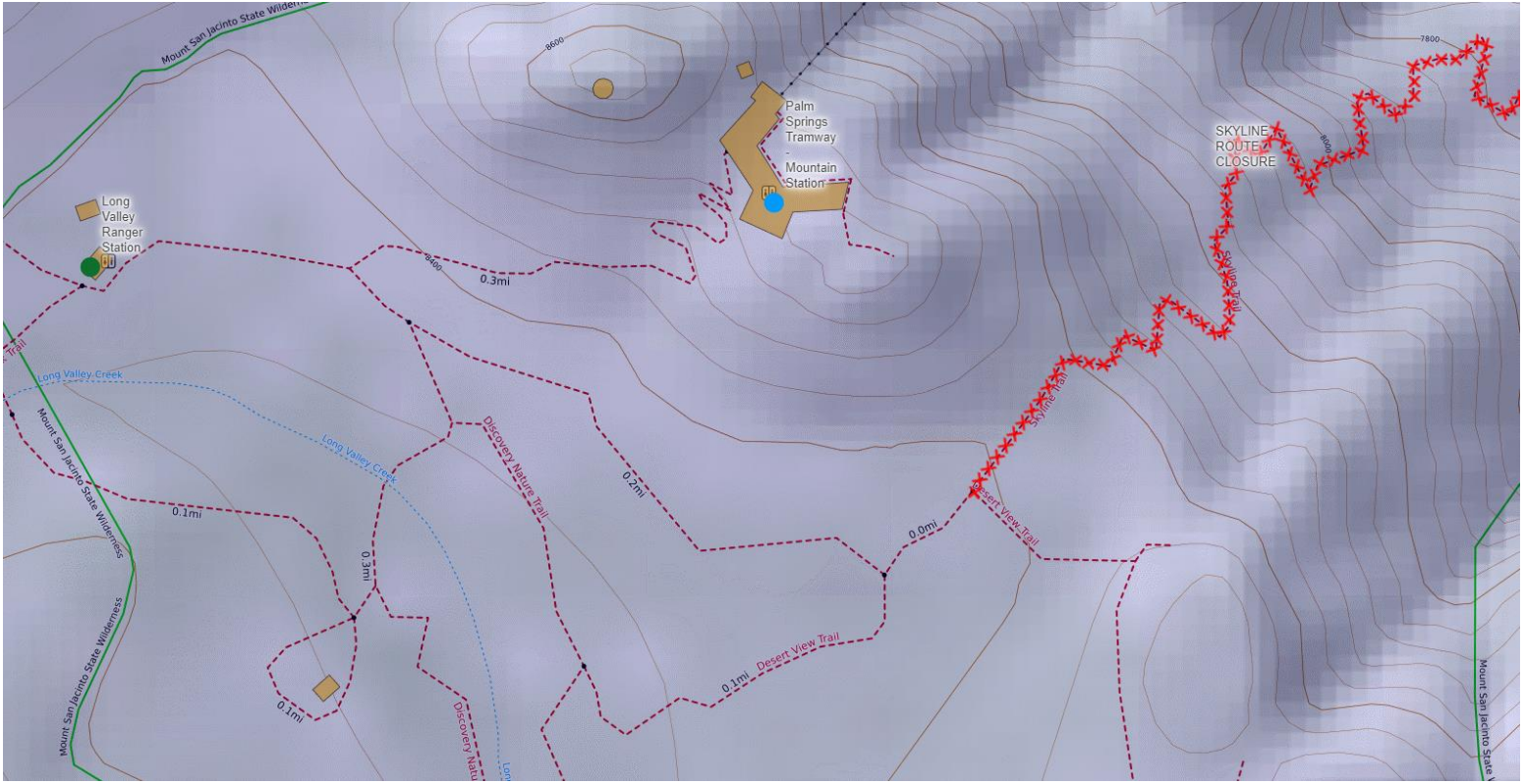


Figure 2 Route Closure shown in red

Pulled Back View of Skyline Route – Palms Springs to Mt. San Jacinto SP

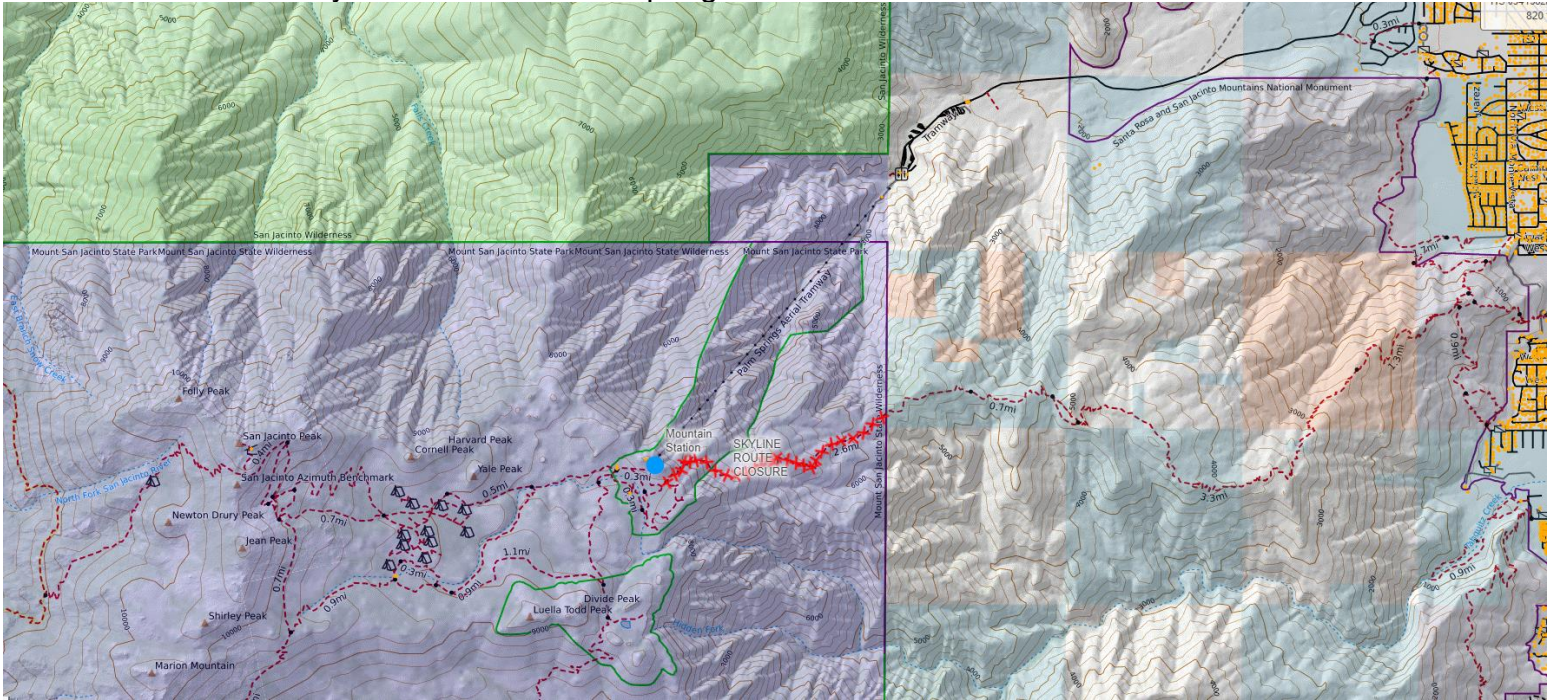


Figure 3 City of Palm Springs Skyline Route Entrance to Mt. San Jacinto State Park

DocuSigned by:  
*Kelly Elliott*  
93AE4EE0BBA64DC...  
\_\_\_\_\_  
Kelly Elliott  
District Superintendent

Authority:

State of California Public Resources Code, Sections 5003 and 5008  
California Code of Regulations, Title 14, Section 4300, 4301(i), and 4326,  
Copies of this order have been filed with the Desert Division Chief's office.

**DECLARATION OF POSTING  
DISTRICT SUPERINTENDENT'S ORDER NO. 954-24-007**

I hereby declare that on July 9, 2024, District Superintendent's Order No. 954-24-007, hereto attached, was posted at the office of the Sector and parks where it is to be in effect, as well as at other locations, which were determined necessary by the Superintendent of the Inland Empire District.

I declare under penalty of perjury that the foregoing is true and correct.

DocuSigned by:  
*Kelly Elliott*  
93AE1EE9BBA64DC...  
\_\_\_\_\_  
Kelly Elliott  
District Superintendent  
Inland Empire District  
  
7/9/2024  
\_\_\_\_\_  
Date