

STATE OF CALIFORNIA
DEPARTMENT OF PARKS AND RECREATION



Route Closure – Skyline Route
Mount San Jacinto State Park and Wilderness

February 1, 2022
Inland Empire District

DISTRICT SUPERINTENDENTS ORDER NO. 954-22-007

Whereas: Skyline Route conditions are unsafe above 5800' within Mt. San Jacinto State Park due to dangerous ice accumulation.

Therefore: Skyline Route is closed until further notice from the 5800' State Park Boundary to its intersection with the Desert View Trail as seen below highlighted in red:

5800' State Park Boundary to Desert View Trail

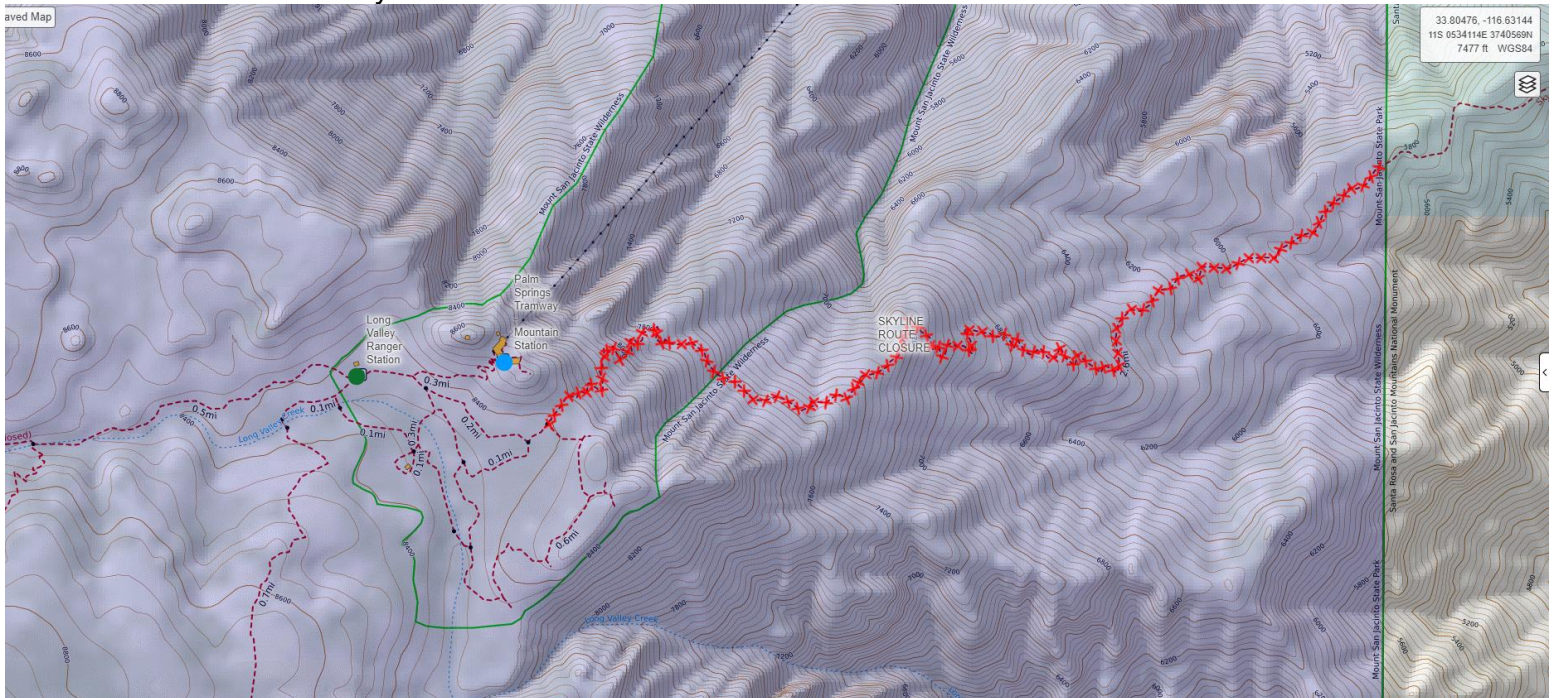


Figure 1 Purple Shaded Area is State Park Boundary

Intersection of Skyline Route and Desert View Trail near Mountain Station

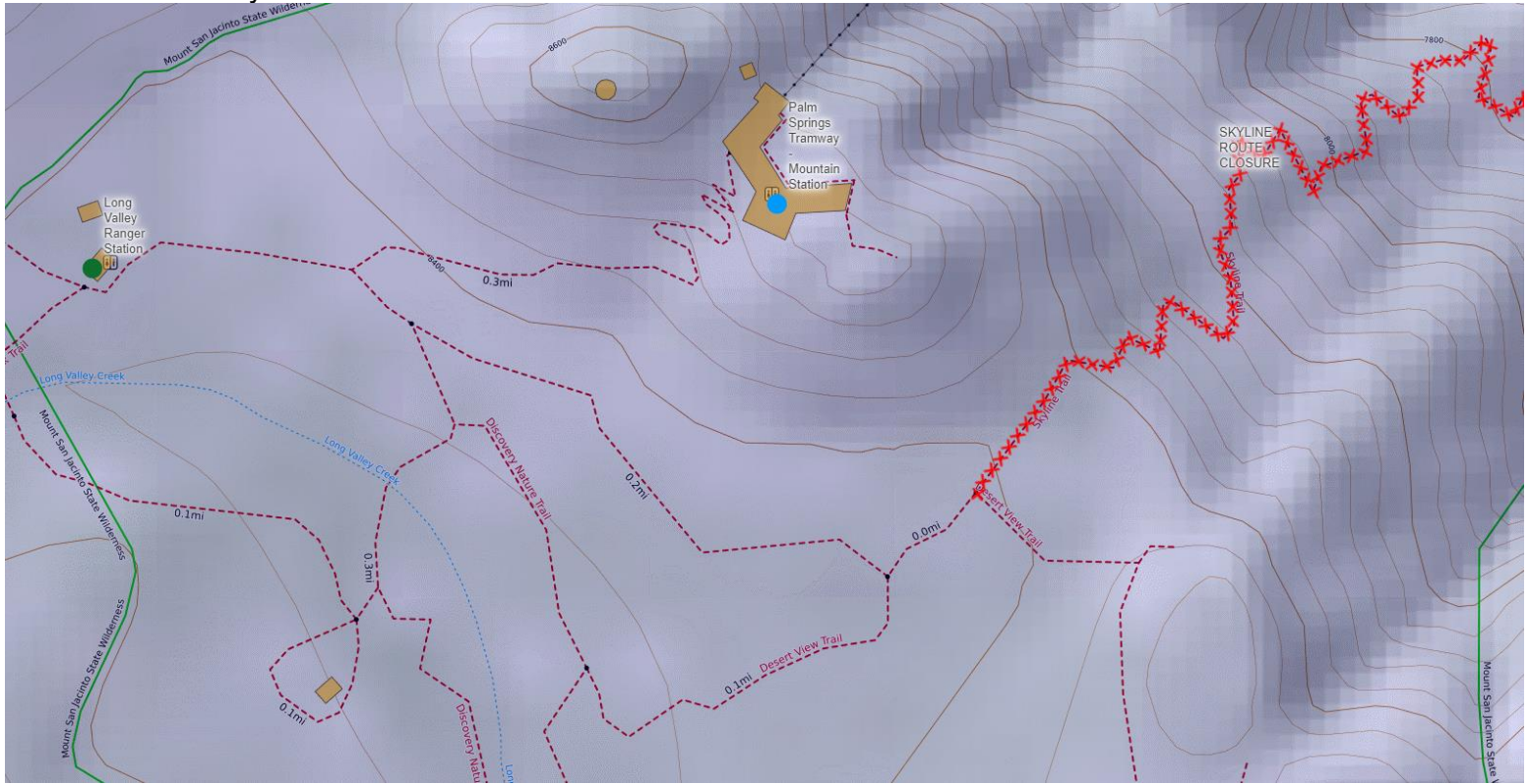


Figure 2 Route Closure shown in red

Pulled Back View of Skyline Route – Palms Springs to Mt. San Jacinto SP

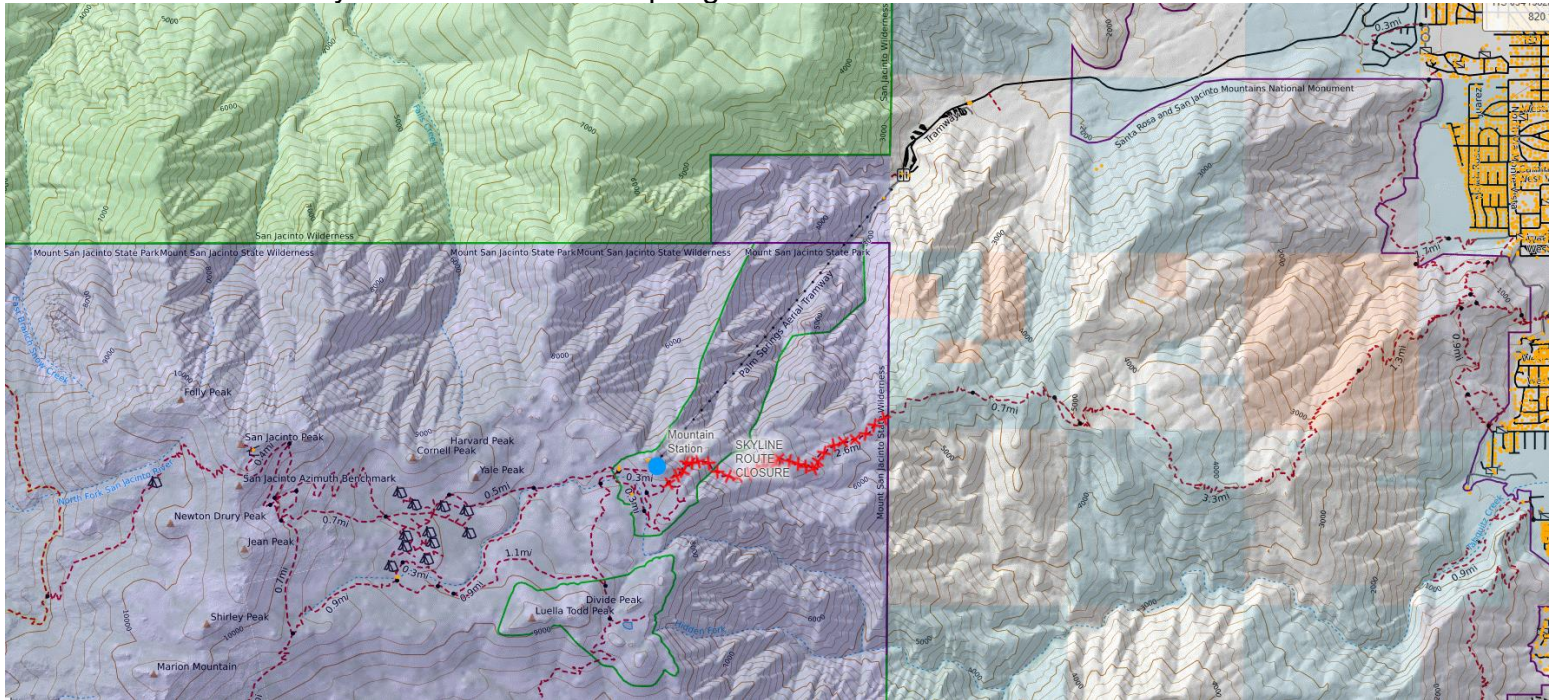


Figure 3 City of Palm Springs Skyline Route Entrance to Mt. San Jacinto State Park

Kelly Elliott

Kelly Elliott
District Superintendent

Authority:

State of California Public Resources Code, Sections 5003 and 5008
California Code of Regulations, Title 14, Section 4300, 4301(i), and 4326,
Copies of this order have been filed with the Desert Division Chief's office.

**DECLARATION OF POSTING
DISTRICT SUPERINTENDENT'S ORDER NO. 954-22-006**

I hereby declare that on February 1, 2022, District Superintendent's Order No. 954-22-006, hereto attached, was posted at the office of the Sector and parks where it is to be in effect, as well as at other locations, which were determined necessary by the Superintendent of the Inland Empire District.

I declare under penalty of perjury that the foregoing is true and correct.

Kelly Elliott

Kelly Elliott
District Superintendent
Inland Empire District

February 1, 2022

Date